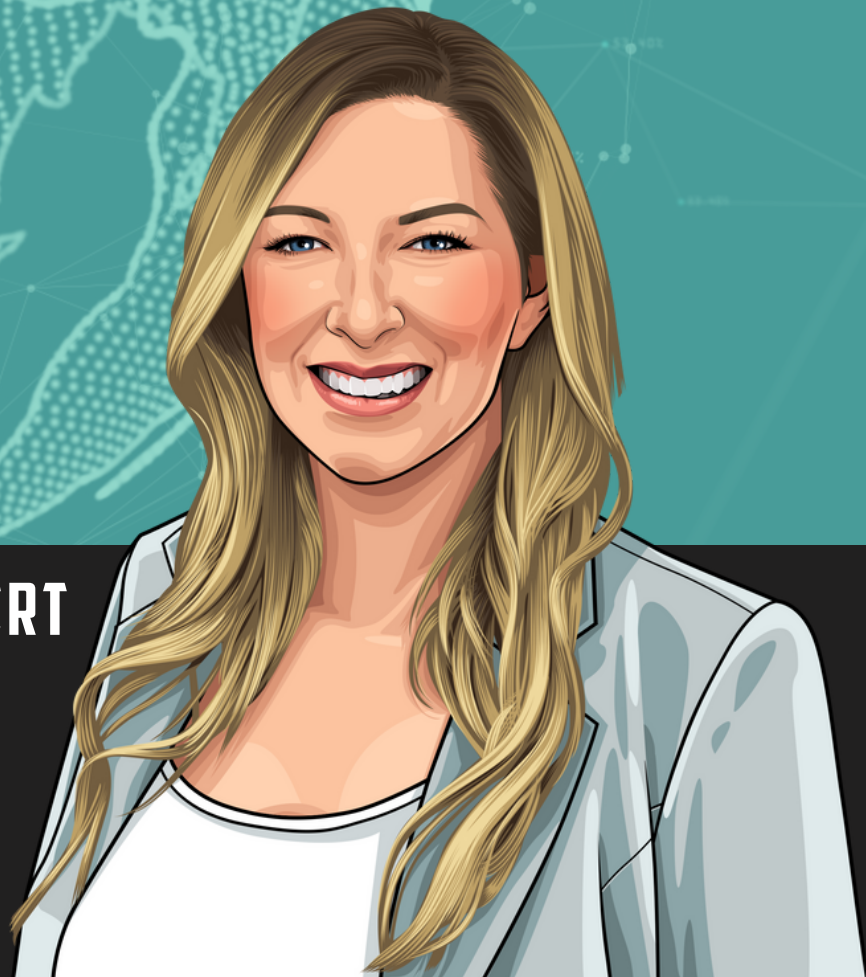


**CLEAN DATA IN,
CLEAN DATA OUT**



UDI IMPLEMENTATION EXPERT

**POWER
SUPPLY**

Ashlea Souffrou | Founder & President of SxanPro

Power Supply UDI Implementation Expert:

Clean Data In, Clean Data Out

Ashlea Souffrou | Founder & President of SxanPro

As we continue to unfold the benefits of the UDI, it's time to ask the question; how accurate is your master inventory data?

Most hospital supply chain professionals know how complicated this question is to answer because they're often relying on manual entry and dealing with a vast array of products across the entire hospital system.

Fortunately, using the UDI eases these pain points. Accurate data is guaranteed because the information embedded into the UDI code is direct from the manufacturer. This is designed to help digitize the manual processes that go into managing the life cycle of the product and standardize the information used.

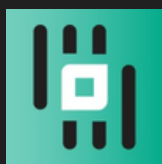
Some of the data that a manufacturer has to include with UDI that hospital facilities have access to are:

-
- Manufacturer
 - Reference Number
 - Brand Name
 - Product Description
 - FDA Product Code
 - 510K Number
 - Storage and Handling Requirements
 - Package Type and Quantity
-

By leveraging technology to capture and utilize clean data; creating a master inventory list is now easier than ever. Thousands of products can be inventoried in significantly less time and with almost zero errors.

Have more UDI implementation questions? Contact Ashlea at: ashlea@sxanpro.com

UDI Implementation Expert Biography:



Ashlea Souffrou
Founder & President SxanPro



Ashlea Souffrou is a 15-year veteran of the medical device industry with a passion and dedication to uncovering sustainable and cost-saving solutions within the healthcare domain. She is the founder and CEO of SxanPro, a technology company that digitizes inventory processes in hospital supply chain. In 2021, Ashlea was awarded a patent for her mobile application technology that extracts product data from a medical device by scanning the UDI (manufacturer) barcode. She is a Certified Materials & Resource Professional (CMRP) through the American Hospital Association (AHA) and actively partners with medical missions throughout the country by donating the SxanPro software and medical supplies. Ashlea resides in Grand Rapids, Michigan with her husband and three sons.

For all your UDI implementation questions, you can contact her at ashlea@sxanpro.com or visit the Sxanpro team at sxanpro.com



Listen on



**POWER
SUPPLY**

Listen on

