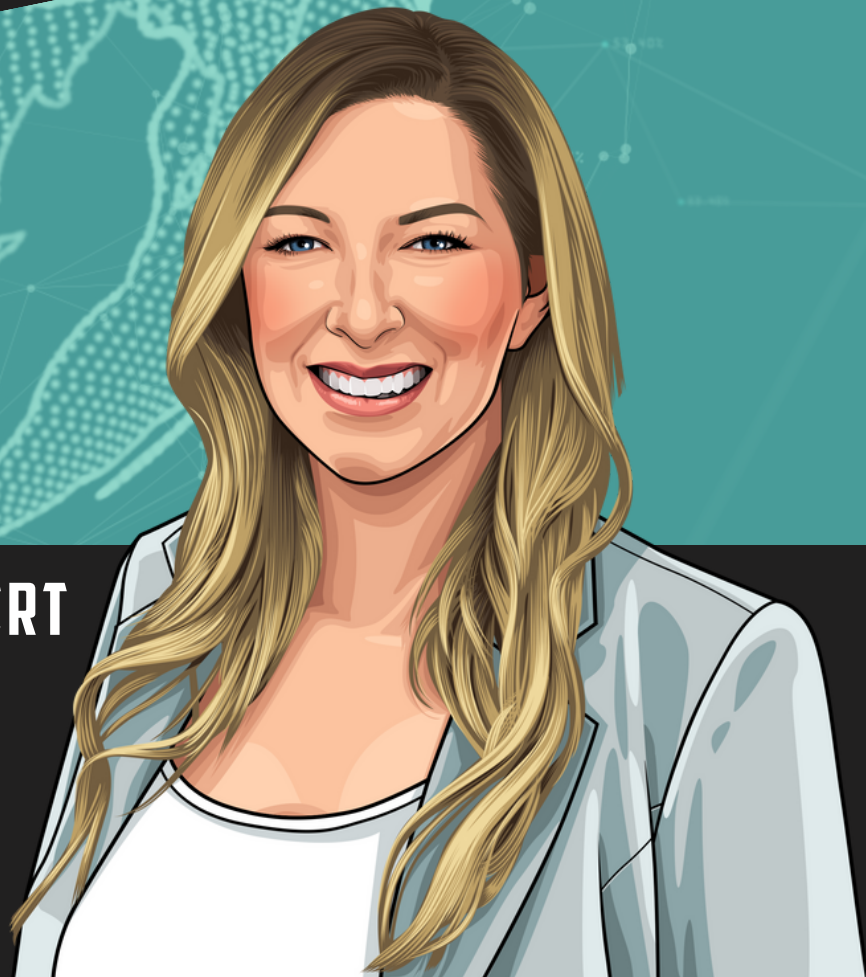


# RECOVERING TIME WITH THE UDI



UDI IMPLEMENTATION EXPERT

POWER  
SUPPLY

Ashlea Souffrou | Founder & President of SxanPro

*Power Supply UDI Implementation Expert™:*

# Recovering Time with the UDI

*Ashlea Souffrou | Founder & President of SxanPro*

Recently, I spent time with one of the largest healthcare systems in Colorado. Like most hospitals across the country, they are performing with too few people and too few hours in the day. Staffing shortages affect almost every department, including supply chain.

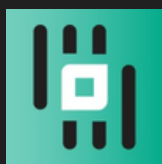
This hospital relied heavily on manual processes to track expiration dates on medical devices throughout the system. A full-time employee (FTE) would go through each supply core and mark every supply item that was going to expire within a year with a red tag. Then every week, that same employee would check each red tagged item and throw away any expired products, spending more than 30 hours each month searching and removing expired supplies.

When the hospital implemented a UDI-based process to build a digital inventory list and capture expiration dates from the UDI; the time recovery was a significant benefit. Supply chain can easily view the expiration dates of every product on the shelves and the FTE now spends less than 2 hours each week managing expiring supplies. By optimizing this one task, 22 labor hours each month are recovered for just one employee, allowing more time to be dedicated to other continuous improvement tasks and improving patient care.

With those results, digitizing supply chain processes for expiration date tracking makes sense, right?

Have more UDI implementation questions? Contact Ashlea at: [ashlea@sxanpro.com](mailto:ashlea@sxanpro.com)

*UDI Implementation Expert Series™ Biography:*



**Ashlea Souffrou**  
Founder & President SxanPro



Ashlea Souffrou is a 15-year veteran of the medical device industry with a passion and dedication to uncovering sustainable and cost-saving solutions within the healthcare domain. She is the founder and CEO of SxanPro, a technology company that digitizes inventory processes in hospital supply chain. In 2021, Ashlea was awarded a patent for her mobile application technology that extracts product data from a medical device by scanning the UDI (manufacturer) barcode. She is a Certified Materials & Resource Professional (CMRP) through the American Hospital Association (AHA) and actively partners with medical missions throughout the country by donating the SxanPro software and medical supplies. Ashlea resides in Grand Rapids, Michigan with her husband and three sons.

For all your UDI implementation questions, you can contact her at [ashlea@sxanpro.com](mailto:ashlea@sxanpro.com) or visit the Sxanpro team at [sxanpro.com](https://sxanpro.com)



Listen on



**POWER  
SUPPLY**

Listen on

